

THE ECONOMY AT A GLANCE

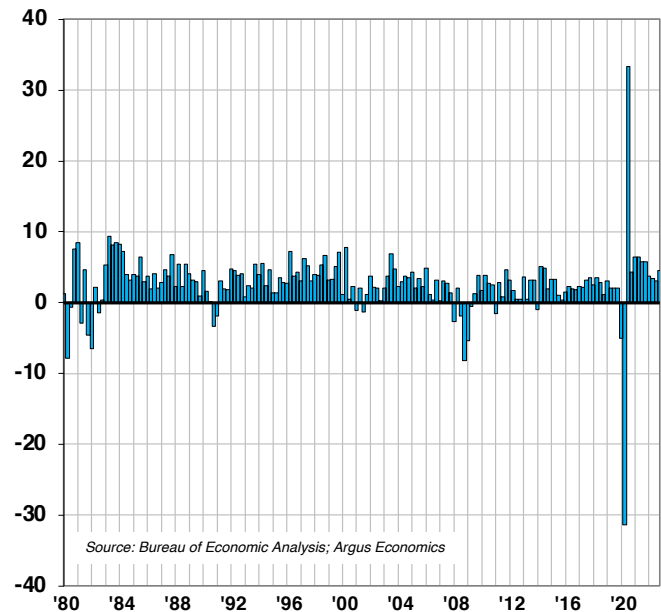
ECONOMIC HIGHLIGHTS

August 16, 2021
 Vol. 88, No. 117

ROUND-TRIP RECOVERY COMPLETE

Recent data illustrates that the economy is still expanding, though some white-hot growth rates in certain sectors are starting to cool. The primary driver of GDP over the next few quarters is likely to be the country's physical health, as the nation recovers from the COVID-19 pandemic. Trends here have turned negative in recent weeks. The employment environment is in better shape than it was a year ago, but still far from full strength. Consumer confidence is mixed. Auto sales have recovered, but inventories are low due to bottle-necks. And the housing market, which had been strong in 1H21, is starting to cool as house prices soar. Rolling the data up, and taking into account rising COVID cases as well as emerging supply chain issues and inventory levels, our model now calls for 5.8% increase in GDP in 3Q21. We also expect good growth in 4Q, before rates fall in 2022. On an annual basis, we look for overall GDP growth of approximately 6.1% in 2021 and 3.7% in 2022. Our estimates are consistent with consensus forecasts and the outlook from the Federal Reserve, which call for growth of 4%-6% in 2021. The GDPNow forecast from the Federal Reserve Bank of Atlanta is 6.3% for 3Q21.

GDP TRENDS & OUTLOOK (% CHANGE)

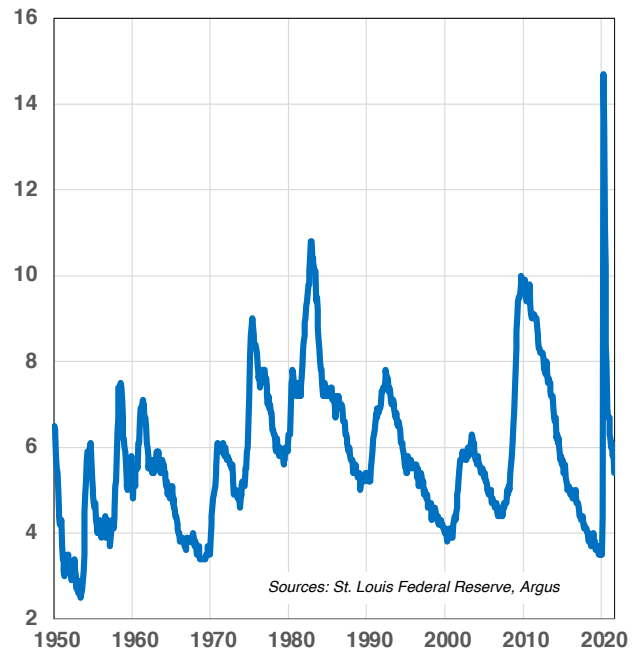


ECONOMIC HIGHLIGHTS (CONTINUED)

STRONG GROWTH IN WAGES AND HOURS

The U.S. economy added 943,000 jobs in July, a sign that economic recovery continues despite the Delta variant. Even more impressive were trends in unemployment and overall income. The unemployment rate dropped to 5.4% from 5.9%. Average hourly earnings were up 0.4% and the average workweek rose 0.2%. These gains put money in the pockets of all workers. Jobs gains were led in reopening sectors such as leisure and hospitality (380k) and local government education (221k). Industries including professional and business services also added jobs. The prior two months featured strong upward revisions, with May growth at 583,000 jobs and June at 938,000. Heading into the payrolls report, the number of jobs was approximately 7 million lower than the pre-COVID level. Still, the economy added 1.9 million jobs in the past 60 days, a positive trajectory. The labor force participation rate remains low at 61.7%, edging up from 61.6% in June; the historical average is 65%. The number of people filing initial unemployment claims each week remains above 350K. Though trending in the right direction, the data indicates that the employment environment is still under stress. We expect the unemployment rate will remain above 5.0% -- and the Fed will keep interest rates low -- into 2022.

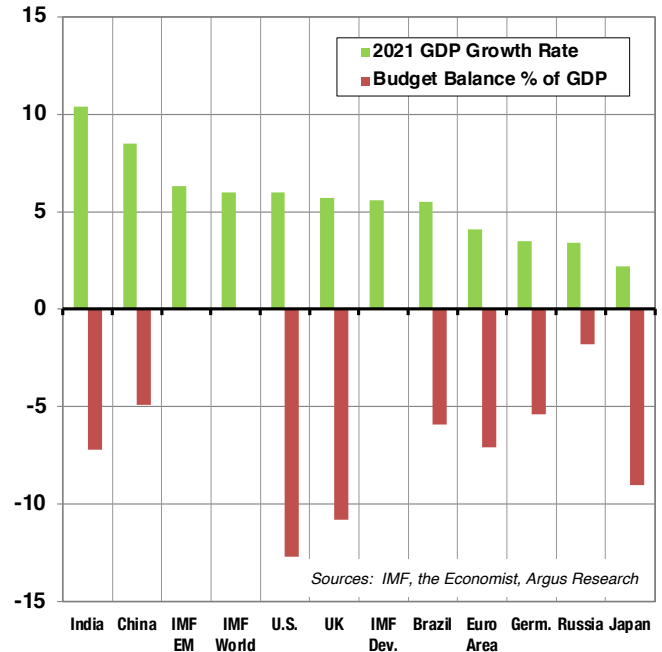
U.S. UNEMPLOYMENT RATE (%)



GLOBAL GDP GROWTH IN RECOVERY MODE

The IMF is now forecasting global economic growth of 6.0% in 2021, as the world recovers from COVID-19 (which resulted in a global GDP contraction of 4.7% in 2020). Growth in 2022 is estimated at 4.9%, upwardly revised by 50 basis points since 2Q21. These are certainly outlier rates. Recent global growth rates include 2.9% in 2019, 3.6% in 2018, and 3.7% in 2017, as well as 3.1%-3.2% growth rates in 2015 and 2016. The rates in 2015-2016 were perceived as low -- but nothing compares to 2020, when world output contracted 3.2%. Looking out to 2021-2022, the IMF expects that emerging markets will grow at the fastest rates and is expecting a GDP increase of 6.3% in 2021 for these countries. Advanced economies are not expected to grow that fast, and the IMF is expecting a gain of 5.6% this year. India is expected to be the top grower, at 9.5%; China is expected to grow 8.1%. There are risks to these forecasts. For example, growth prospects have weakened somewhat for emerging markets, which are lagging in vaccine availability and vaccination rates. The Japanese 10-year Treasury bond continues to yield 0% and rates are negative in Europe. But the general direction for the global economy is higher well into 2022.

GLOBAL GDP FORECASTS (%)

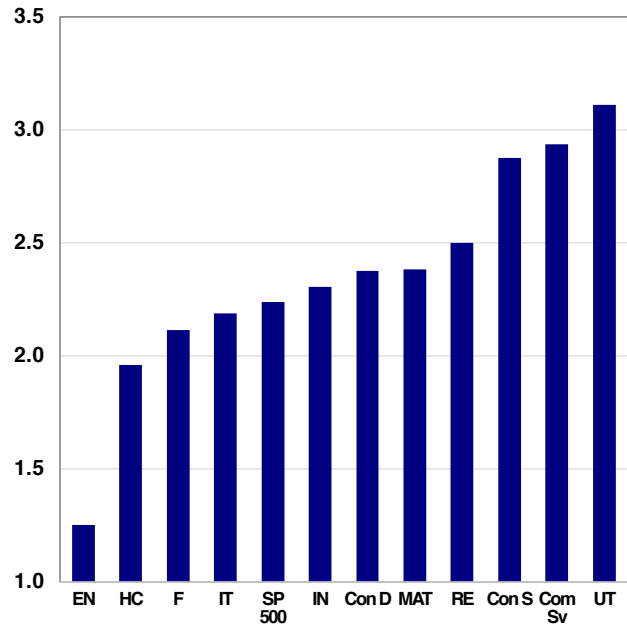


FINANCIAL MARKET HIGHLIGHTS

VALUES IN HEALTHCARE, FINANCIAL, TECH

Investors hunting for stocks that reasonably balance long-term growth and current value characteristics might want to look at companies in the Financial Services, Technology, and Healthcare sectors. These are among the industry groups that currently are selling for PEGY ratios -- (price/earnings)/(growth+yield)-- at or below the S&P 500's ratio of 2.4-times. To generate the PEGY ratios, we use the P/E ratio for each sector based on forward earnings for the numerator. For the denominator, we average the growth rates for the past three years, along with two years of forward estimates, in order to achieve a smoother and less-volatile earnings trend. Then we add the current yield, to approximate total return. Premium-valued sectors with low growth rates include Consumer Staples and Utilities. Our Over-Weight sectors include Healthcare, Financial Services, Industrial, Communication Services, and Technology. Our Under-Weight sectors include Energy and Consumer Discretionary.

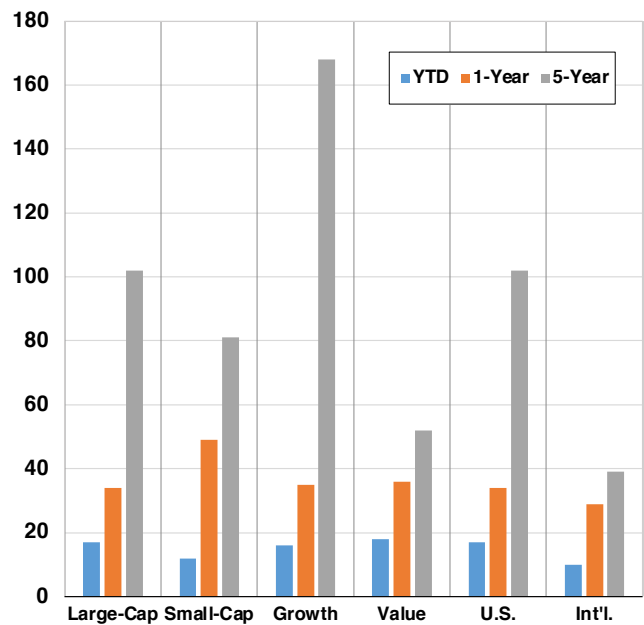
SECTOR PEGY RATIOS



ARGUS' FAVORED CLASSES AND SEGMENTS

Stocks picked up momentum in July and maintained the performance lead over bonds heading into a challenging part of the year (the back half of 3Q). Our Stock-Bond Barometer Model is close to equally balanced between stocks and bonds for long-term investors. In other words, these asset classes should be near their normal weights in diversified portfolios. We have looked for large-cap companies with strong balance sheets and experienced management teams to be the leaders during the eventual recovery from COVID-19. This played well, and now (with vaccines being distributed) small-cap risks are reduced. Our recommended exposure to small- and mid-caps is now 15% of equity allocation, in line with the benchmark weighting. U.S. stocks have outperformed global stocks over the trailing one- and five-year periods. We expect this to continue over the long term, given volatile global economic, and currency conditions. That said, international stocks offer favorable near-term valuations, and we target 15%-18% of equity exposure to the group. Value has been a surprise leader in 2021. We anticipate that growth, led by Tech and Healthcare, will recover and outperform value, led by Energy and Materials, as long as interest rates remain low.

MARKET SEGMENT RETURNS 2021 (% THROUGH 7/30/21)



ECONOMIC CALENDAR

Previous Week's Releases

Date	Release	Month	Previous Report	Argus Estimate	Street Estimate	Actual
17-Aug	Retail Sales	July	0.6%	0.0%	-0.2%	NA
	Retail Sales; ex-autos	July	1.3%	0.2%	0.0%	NA
	Business Inventories	June	0.5%	0.6%	0.6%	NA
	Industrial Production	July	0.4%	0.4%	0.4%	NA
	Capacity Utilization	July	75.4%	75.5%	75.7%	NA
18-Aug	Housing Starts	July	1643 K	1550 K	1600 K	NA
19-Aug	Leading Economic Indicators	July	0.7%	0.7%	0.7%	NA

Next Week's Releases

Date	Release	Month	Previous Report	Argus Estimate	Street Estimate	Actual
31-Aug	Consumer Confidence	August	129.1	NA	NA	NA
1-Sep	ISM Manufacturing	August	59.5	NA	NA	NA
	Construction Spending	July	0.1%	NA	NA	NA
2-Sep	Trade Balance	July	-\$75.7 Bln.	NA	NA	NA
	Factory Orders	July	1.5%	NA	NA	NA
	Non-farm Productivity	2Q	4.3%	NA	NA	NA
	Unit Labor Costs	2Q	-2.8%	NA	NA	NA
3-Sep	ISM Non-Manufacturing	August	64.1	NA	NA	NA
	Non-farm Payrolls	August	943 K	NA	NA	NA
	Average Weekly Hours	August	34.8	NA	NA	NA
	Average Hourly Earnings	August	0.4%	NA	NA	NA
	Unemployment Rate	August	5.4%	NA	NA	NA

Argus Research Co. (ARC) is an independent investment research provider whose parent company, Argus Investors' Counsel, Inc. (AIC), is registered with the U.S. Securities and Exchange Commission. Argus Investors' Counsel is a subsidiary of The Argus Research Group, Inc. Neither The Argus Research Group nor any affiliate is a member of the FINRA or the SIPC. Argus Research is not a registered broker dealer and does not have investment banking operations. The Argus trademark, service mark and logo are the intellectual property of The Argus Research Group, Inc. The information contained in this research report is produced and copyrighted by Argus Research Co., and any unauthorized use, duplication, redistribution or disclosure is prohibited by law and can result in prosecution. The content of this report may be derived from Argus research reports, notes, or analyses. The opinions and information contained herein have been obtained or derived from sources believed to be reliable, but Argus makes no representation as to their timeliness, accuracy or completeness or for their fitness for any particular purpose. In addition, this content is not prepared subject to Canadian disclosure requirements. This report is not an offer to sell or a solicitation of an offer to buy any security. The information and material presented in this report are for general information only and do not specifically address individual investment objectives, financial situations or the particular needs of any specific person who may receive this report. Investing in any security or investment strategies discussed may not be suitable for you and it is recommended that you consult an independent investment advisor. Nothing in this report constitutes individual investment, legal or tax advice. Argus may issue or may have issued other reports that are inconsistent with or may reach different conclusions than those represented in this report, and all opinions are reflective of judgments made on the original date of publication. Argus is under no obligation to ensure that other reports are brought to the attention of any recipient of this report. Argus shall accept no liability for any loss arising from the use of this report, nor shall Argus treat all recipients of this report as customers simply by virtue of their receipt of this material. Investments involve risk and an investor may incur either profits or losses. Past performance should not be taken as an indication or guarantee of future performance. Argus has provided independent research since 1934. Argus officers, employees, agents and/or affiliates may have positions in stocks discussed in this report. No Argus officers, employees, agents and/or affiliates may serve as officers or directors of covered companies, or may own more than one percent of a covered company's stock. Argus Investors' Counsel (AIC), a portfolio management business based in Stamford, Connecticut, is a customer of Argus Research Co. (ARC), based in New York. Argus Investors' Counsel pays Argus Research Co. for research used in the management of the AIC core equity strategy and model portfolio and UIT products, and has the same access to Argus Research Co. reports as other customers. However, clients and prospective clients should note that Argus Investors' Counsel and Argus Research Co., as units of The Argus Research Group, have certain employees in common, including those with both research and portfolio management responsibilities, and that Argus Research Co. employees participate in the management and marketing of the AIC core equity strategy and UIT and model portfolio products.

